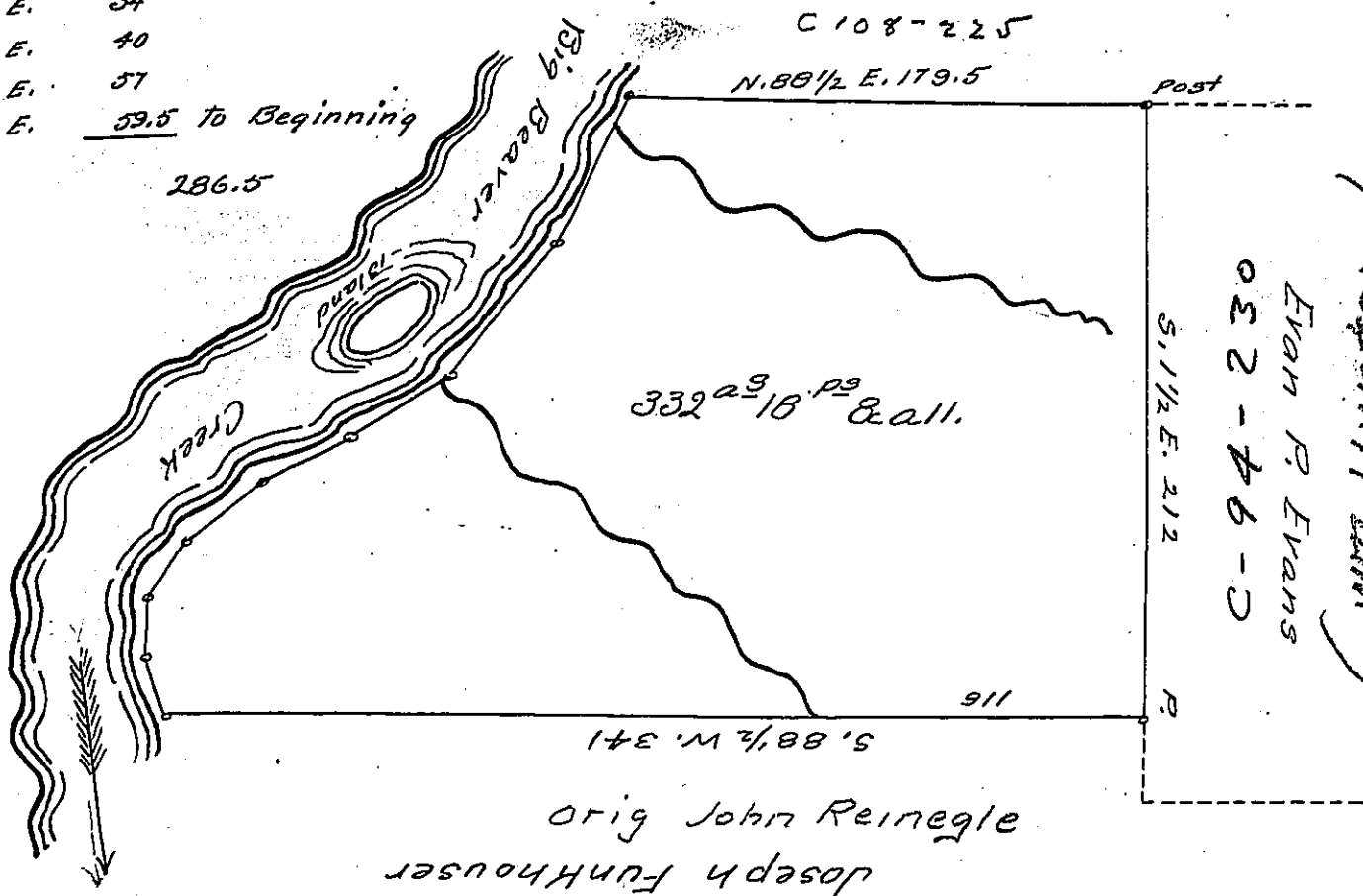


Courses & distances up the Creek  
along tow-path

N. 16 1/2	W.	22
N. 6	E.	18.7
N. 30	E.	21.1
N. 50	E.	34.2
N. 64	E.	34
N. 55 3/4	E.	40
N. 38 1/2	E.	57
N. 24 1/4	E.	59.5 To Beginning

North Sewickley  
(BEAVER)

Joseph Funkhouser.



(Wm Hunter)  
Evan P. Evans  
C-94-230  
C-94-6-D  
S. 11 1/2 E. 212

THE ABOVE is a draught of a tract of land resurveyed October 26, A.D. 1852 lying on the East bank of Big Beaver Creek in North Sewickley township Beaver Co. which said tract was surveyed 12<sup>th</sup> February 1795, in pursuance of a Warrant granted to James-Hunter for 400 acres of land, dated 14<sup>th</sup> April A.D. 1792-Containing by resurvey 332 acres & 18 perches and allowance of 6 per. Cent

Azariah Wynn, C.S.

To the Hon. J. Porter Brawley  
Surveyor General, Pa.

IN TESTIMONY that the above is a copy of the original remaining on file in the Department of Internal Affairs of Pennsylvania, made conformably to an Act of Assembly approved the 16th day of February, 1833, I have hereunto set my Hand and caused the Seal of said Department to be affixed at Harrisburg, this Twenty-eighth day of March 1905,

*Isaac D. Brown*  
Secretary of Internal Affairs.